

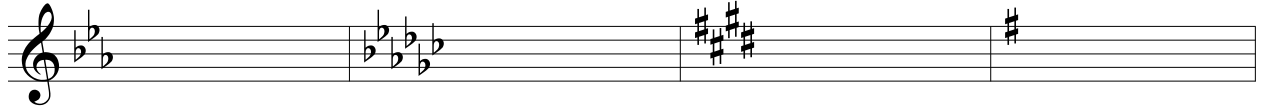
KEY

Week 8- Midterm Review

MUTH 1400

Anna E. Norris
www.annaenorris.com

Identify the major and minor keys:



Eb major

Gb major

E major

G major

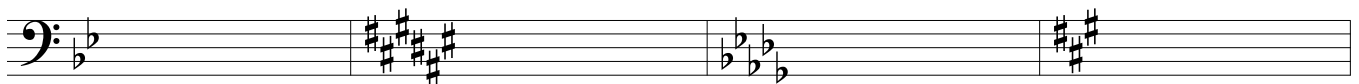
c minor

eb minor

c# minor

e minor

5



Bb major

F# major

Db major

A major

g minor

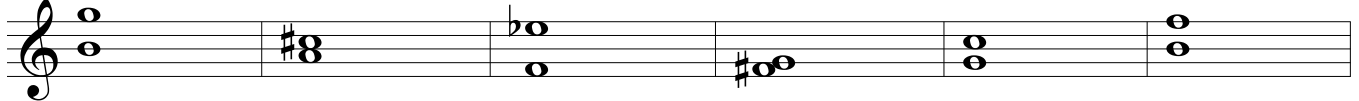
d# minor

bb minor

f# minor

Identify the intervals:

9



m6

M3

m7

m2

P4

d5

Write the given interval above the note:

15



M6

A4

M7

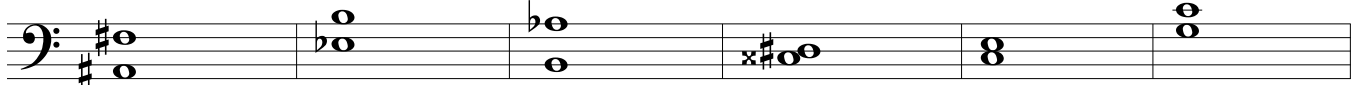
m3

M2

P5

Write the given interval below the note:

21



m6

A5

d7

m2

M3

P4

Identify the quality of the given chord:

27



minor

dominant 7

augmented

half-dim 7

major

fully-dim 7

Spell the following chords:

- | | | | |
|--------------------------------------|-------------------------|--------------------------------------|---|
| 1. dm: iv ⁶ | G <u>B</u> b D | 9. cm: i ⁶ ₄ | C E <u>b</u> <u>G</u> |
| 2. EM: vi | C# E G# | 10. EbM: V ⁴ ₃ | B <u>b</u> D <u>F</u> A <u>b</u> |
| 3. AbM: ii | B <u>b</u> D <u>b</u> F | 11. GM: iii | B D F# |
| 4. fm: V ⁶ ₄ | C E <u>b</u> <u>G</u> | 12. gm: III | B <u>b</u> D F |
| 5. Eb: vii ⁰ ₆ | D <u>F</u> A <u>b</u> | 13. GbM: IV ⁶ | C <u>b</u> <u>E</u> <u>b</u> G <u>b</u> |
| 6. bm: VI ⁷ | G B D F# | 14. c#m: ii ⁰ | D# F# A |
| 7. g#m: VII | F# A# C# | 15. BM: ii ⁶ ₅ | C# <u>E</u> G# B |
| 8. bbm: v ⁶ | F <u>A</u> <u>b</u> C | 16. a#m: V ⁴ ₂ | E# G <u>x</u> B# <u>D</u> # |

Part-write the following example:

33

cm: i V ⁶/₄ i i viio i V V ⁶/₂ i V i v iv iio V

37

i VI VII III VI iv V i viio i iv i i V i

Answer the following questions:

1. A grouping of four measures of music, often marked by a cadence, is called a phrase.
2. Two melodic intervals which are to be completely avoided in the voice leading of this period are the octave and fifth. True or false? false
3. A form of repetition, this compositional technique allows for the repeated material to be heard at new pitch levels. sequence
4. The term used to describe how fast the harmony changes is:
 - a. harmonic analysis
 - b. harmonic rhythm
 - c. rhythmic mode
 - d. chord changes

Analyze the following example where blanks are provided:

Cadence: HC

Key: DM I \underline{V}_5^6 \underline{vi}^6 \underline{IV}_4^6

Cadence: IAC 7-1

\underline{vi}^6 \underline{IV}_4^6 \underline{V}^6 I

Briefly comment on the form of the above example:

You should mention the antecedent and consequent phrases resulting from the HC and IAC. Mention that it is a parallel period and give examples of why.

Concepts to be familiar with:

- Meters
- Motions
- Doublings
- Uses of $\frac{6}{4}$ chords
- Form Vocabulary
- Transpositions
- Reading C Clefs